

# Reassuring citizens beyond safety

## Smart & Safe City, Seoul

January 15, 2013  
Seoul Safety Control Center

# Table of Contents

Visions of Seoul Safety Control Center

Project Outline and Background

Functions and Operating Plan

Facilities



## Visions of Seoul Safety Control Center

**Integration of control functions** through inter-organizational **sharing** and **cooperation** realizes a safe and strong city for citizens and against crisis

## Sharing, Cooperation, Integration



Sharing and cooperative space creates **budget cuts** and **synergy effects**



Expected Effects

Integration of functions **minimizes social costs** (victims and property damages)



Y 2010, Seoul, Disasters **96,243** cases

Casualties **60,429** Property damages **69.5** billion won



Y 2010, Traffic Fatalities **427**

Traffic Congestion Costs **8.5** trillion won

Integrated establishment of urban management control tower realizes

## Smart Safe City

### Strengthening Actions



Disaster scene video relay, sharing,  
support decision-making

### Citizen Participation



UCC: SNS/Blog, Mobile  
Diversifying citizen participation  
channels

### Notifying Situation



DMB CBS E-board

Notifying disasters, traffic info to  
citizens

## Seoul Safety Control Center



### Data Collection/Analysis



Real-time collection/analysis of  
weather info. e.g. rainfall, snowfall

### Situation Monitoring



Sharing CCTV info with  
districts/agencies, surveillance of  
vulnerable areas and traffic

### Liaison with Relevant Agencies



Weather Center, Forest Service,  
Emergency Agency, 119, etc.



## Project Outline and Background



# Overview of Seoul Safety Control Center



## | Location & Size |

- Location: B3 of the building
- Size: 472 m<sup>2</sup>, 112 seats

## | Construction Period |

- Dec. 2011 – Oct. 2012

## | Project Cost |

- 5.2 billion won

## Details

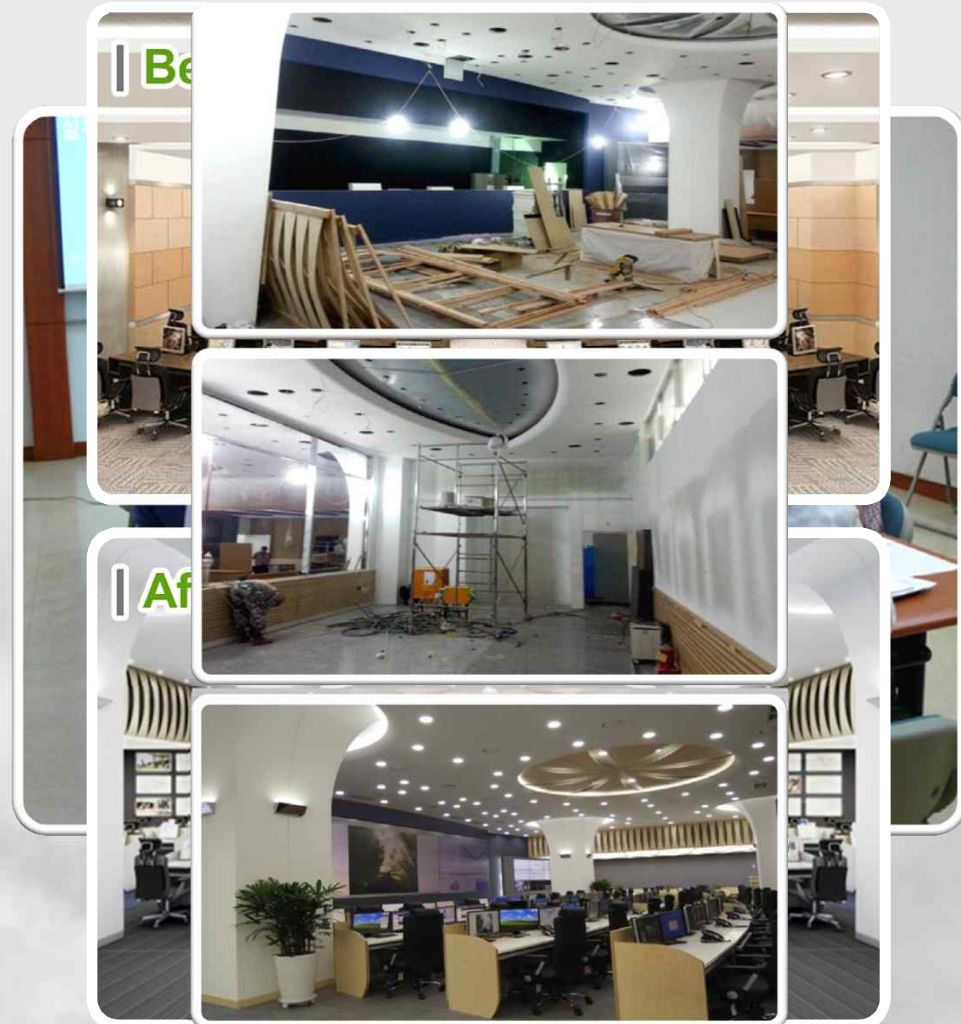
- **Integration of disaster, traffic and chungmu control center** (server, network and video equipment)
- **Integration of CCTV digitals for control** (817No in total of Police, Facilities Management Corporation, Disaster Management, Traffic Information Center, etc.)
- **Real-time linkage between integrated control center and field** (helicopter, mobile command center, portable video system)
- **Videoconferencing system** (city•government/city•district/control center•mobile command center )





## Process of sharing and cooperation for integrated control center

- ① Established a plan for disaster control center relocation  
Apr. 2011
- ② Project kick-off  
Dec. 2011
- ③ Decided functional integration and location change of control center  
Jun. 2012
- ④ Changed building design  
Jul. 2012
- ⑤ Construction completed  
Oct. 2012



## Comparison of Control Center (before/after)

### | Previous Control Center |





## Functions and Operating Plan



## Constant monitoring of extreme rainfall or snow followed by prompt alert

- Emergency monitoring 24hours and 365days, and prompt forecast/alert
- Step-by-step emergency management agency operations, controlling and taking actions against disasters, and commanding recovery operations (17-53 staffs by phase)



Summer

Flood Control/Heat Wave



Winter

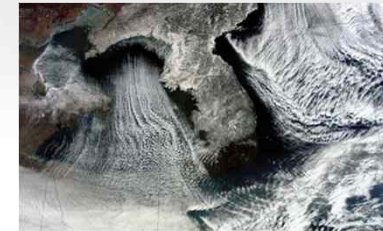
Snow Removal/Cold Wave

May 15



Oct.15

Nov.15



Mar.15





# Real-time monitoring of traffic conditions, and changing to support system in case of disaster

Normal operations

Analysis/provision of traffic condition monitoring info

Traffic emergency

Video monitoring of road restrictions

Disaster

Disaster response support



Parking car enforcement cameras to be used as disaster management



# War management in case of emergency, **ensuring the safety of Seoul**

## Normal operations

Situation analysis and support in decision making

### DID / Beam Projector



### CCTV Linkage



### Integrated Control System



### Videoconferencing System



### NBC Protection Facilities



### EMP Equipment



## Emergency

Maintaining situation and support in military operations





## Correlated response in case of simultaneous crises

### | Normal Operations |

Normal  
operations

Disaster + Traffic Mgt(8staff)

### | Emergency |

Disaster  
Stages 1,2

Disaster + Traffic Mgt (43staff)

Chungmu

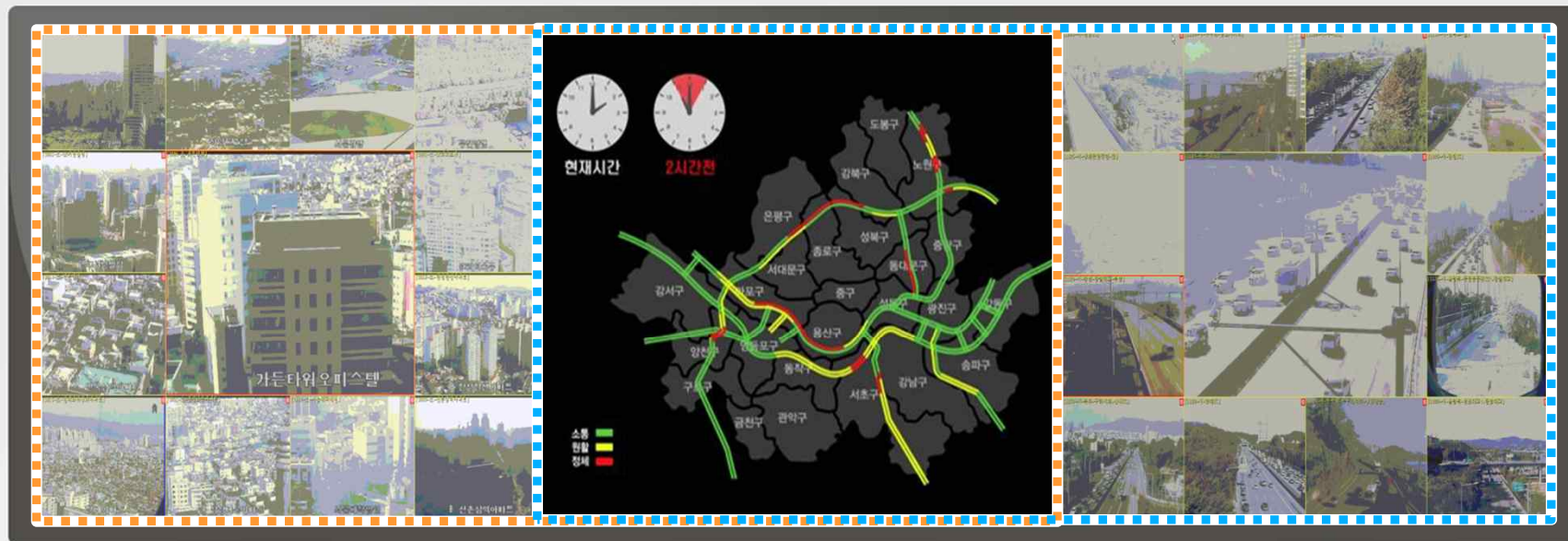
Ulchi Exercise

Disaster  
Stage 3

Disaster + Traffic Mgt (59staff)

Separate space for Chungmu

## Multi-functional video system sharing in case of complex situations



### | Disaster Video |

- Principal rivers/bridges
- Inundated/snow areas

### | Video Sharing |

- GIS info / traffic info
- Cars on road, aircrafts

### | Traffic Video |

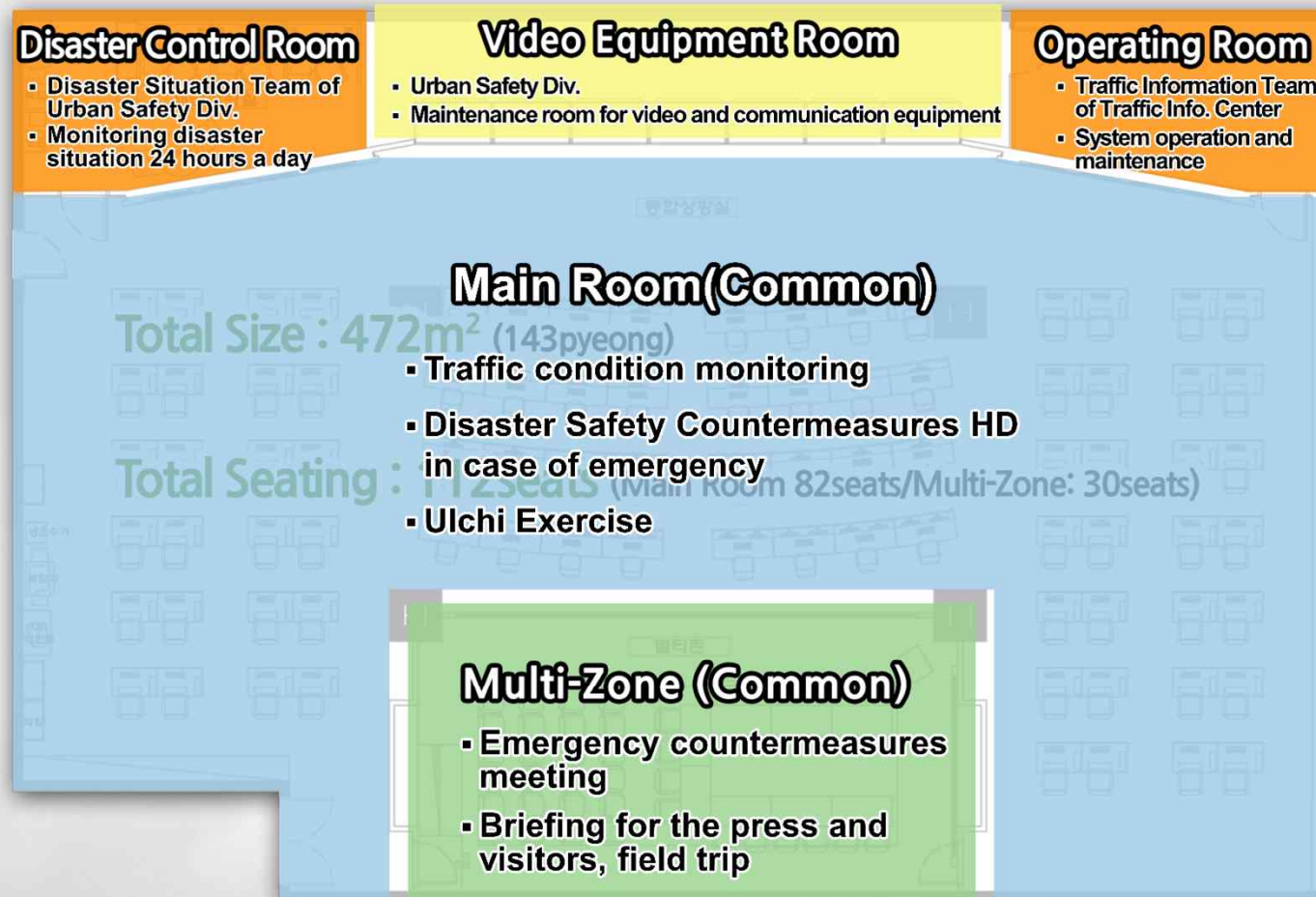
- High speed roads
- Principal arterial roads and tunnels



## Facilities

## Flexible space is designed to strengthen inter-organizational cooperation and effective response

▪ Total Size : 472m<sup>2</sup>    Total Seating : 112seats



## Situation and stage-specific staff deployment and space utilization





Introduction of **cutting edge infrastructure and equipment for optimal response** to various crisis situations

- Linkage and integration of 817 CCTVs of 5 agencies in the city
- Top-spec display board  
**“70 inch Cube X 21No / 46 inch DID X 24No”**
- Real-time emergency monitoring, quick response  
**“Mobile Equipment Linkage and Field Videoconferencing”**



Field Command (Bus)



Police Helicopter



Video Vehicle



SNS



App.

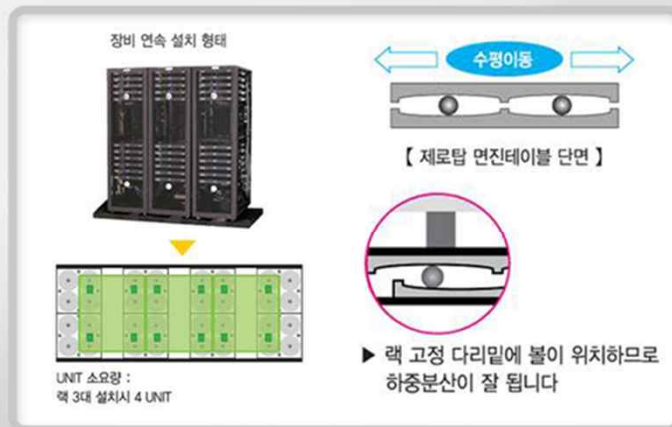


## Seismic special class, NBC protection 1<sup>st</sup> class, eco-friendly materials



### | Eco-friendly environment for staff working 24hours |

- Lighting and ventilation enhanced
- Eco-friendly materials e.g. birch



### | Seismic special class, NBC protection 1<sup>st</sup> class |

- Interior planning against earthquakes, NBC



# • Ensuring safe living of Seoulites •

Seoul Safety Control Center

will keep the safety of Seoul.