



Website



The Seoul  
Research  
Data Service



YouTube



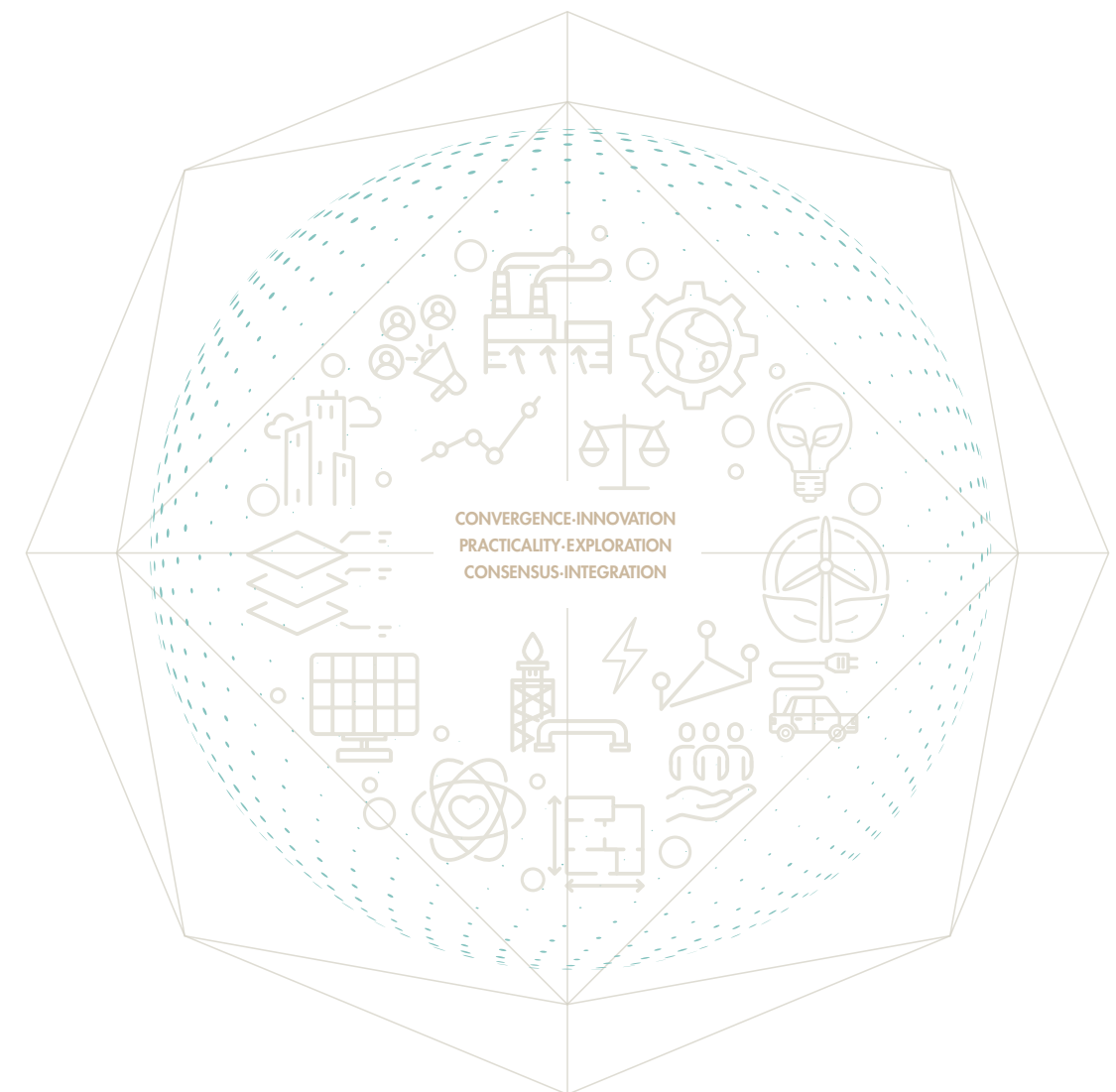
Instagram



Facebook

The Platform for Integrated Research Between  
Policy and Technology for the City of Seoul

## THE SEOUL INSTITUTE



서울연구원  
The Seoul Institute

### Seocho Headquarters Campus


57 Nambusunhwan-ro, 340-gil, Seocho-gu, Seoul 06756 Korea

Tel: +82-2-2149-1000 Fax: +82-2-2149-1019

[www.si.re.kr](http://www.si.re.kr)



서울연구원  
The Seoul Institute



The Seoul Institute (SI) is the only research organization in Korea devoted solely to addressing the core issues facing cities. We develop solutions to urban challenges encountered by Seoul through interdisciplinary research in humanities-social sciences and science-technology.

## CONTENTS

04	Message from the President
06	Interdisciplinary Research designed to Realize Seoul Metropolitan Government's Vision of Making Seoul a Globally Attractive City, Going Together with the Socially Neglected
08	Milestones & Achievements
10	About the SI
<b>13</b>	<b>SI's Divisions</b>
<b>14</b>	<b>Research</b>
14	Strategic Research Division
15	AI & Big Data Research Division
16	Economic Research Division
17	Urban Society Research Division
19	Urban Planning & Design Research Division
20	Smart Transportation Research Division
21	Urban Infrastructure Research Division
23	Urban Environment & Climate Change Research Division
25	Seoul Public Investment Management Center
<b>26</b>	<b>Operations</b>
27	SI Research Publications

**We are committed to becoming an integrative public policy think tank that renders a better quality of life for Seoulites and strengthens Seoul's urban competitiveness.**

Founded in 1992, with funds provided by the Seoul Metropolitan Government (SMG), as the Seoul Development Institute and renamed the Seoul Institute (SI) in 2012, the institute is a research organization based in Seoul and focuses on comprehensive urban policy. The SI's research spans a wide array of areas, including urban planning & design, transportation, the environment, energy, administration & local finance, economic & industrial development, welfare, culture, urban information, and safety-disaster preparedness. We have produced high-quality, evidence-based public policy recommendations for the municipality of Seoul.

Upon merging with the Seoul Institute of Technology (SIT) in November 2023, the organization has relaunched as the country's only intersectoral and interdisciplinary knowledge hub providing high-impact research on policy issues as well as science and technology. We work to set the agenda for the future of Seoul, provide a better quality of life for Seoul residents, and enhance the South Korean capital's urban competitiveness.

In unprecedented times of change and uncertainty, the city of Seoul, a global megacity, is beset with increasingly diverse and complicated urban problems. We are dedicated to taking on new shifts and challenges.

With a vast pool of research talent, we are committed to carrying out ground-breaking research in myriad fields and identify a future vision and policy agenda for the city. Moreover, we will continue to improve the SMG's ability to proactively navigate risks and opportunities by influencing its policy and decision-making through pioneering, fact-based research and analysis.

We are genuinely committed to generating actionable policy ideas that help Seoul cement its status as a sustainable, innovative, world-leading global city.

On behalf of the SI, I thank all of our supporters who make our work possible and kindly ask for your unwavering interest and support.

**We are dedicated to taking on new shifts and challenges in a bid to safeguard the safety of all citizens as together we weave a brighter future.**

With best wishes,  
Oh Kyun  
President, Seoul Institute






# THE SEOUL INSTITUTE

Interdisciplinary Research designed to  
Realize the Seoul Metropolitan Government's Vision of Making Seoul  
a Globally Attractive City,  
Going Together with the Socially Neglected

## Coprosperity

An inclusive city  
valuing all citizens

- Strategies to Build an Inclusive City
- Digital Strategy for Care Services for the Socially Neglected
- Seoul's Mass Transit System Providing Improved Accessibility for the Socially Neglected

## Attractiveness

A world-leading global city

- Strategies to Make Seoul a Startup City for Unicorn Companies
- Directions in Seoul's Housing Policy in View of Changing Demographics and Housing Demand
- Ways to Increase the Impact of Clean Mobility Solutions on the Environment
- A Plan on Managing Streams in Seoul in Response to Climate Change

## Urban Resilience

A safer city

- Strategies to Set up an Integrated, Preemptive Digital Sex Crime Monitoring System using Artificial Intelligence (AI)
- DX (SIDEX, Seoul Infrastructure Data Expressway) Plan Aimed at Improving the Safety of the Aging Infrastructure in Seoul and Cutting its Future Costs



## Milestones & Achievements

South Korea's capital of Seoul is like a gemstone with limitless potential. The Seoul Institute (SI) was established in 1992 with an aim of developing solutions to public policy challenges faced by the South Korean capital. The research organization strives to improve the municipality of Seoul and make the city more competitive, as well as increase the quality of life for the city's residents.



1992: Formed in Nonhyeon-Dong



1994: Moved to Samgseong-Dong

Since 1992



1997: Moved to Yejang-Dong



2003: Moved to its current location, Seocho-Dong



2022: Celebrated its 30th anniversary

1992

July 14, 1992

**Establishment of the Seoul Development Institute was approved.**

1990s

- 1992. 9. 23.** Inauguration of the first president, Choi Sang-cheol
- 1992. 10. 1.** Creation of the Seoul Development Institute
- 1994.** Designing Seoul for the 21st Century  
2011 Seoul Plan
- 1995.** Ways to Enhance Quality of Life for Vulnerable Populations
- 1996.** Managing Traffic Demand in Seoul's CBD  
Controlling Development Density in Residential Areas
- 1997.** Revamping the Management System of Seoul CBD  
Assisting the 17th FIFA World Cup and Creating World Cup Park  
Developing Seoul into a Walkable City
- 1998.** Building Sangam Digital Media City (DMC) as a Millennium City
- 1999.** Devising an E-governance System for the Seoul Metropolitan Government

2000s

- 2000.** Preserving Bukchon Hanok Village
- 2002.** Supporting the Cheonggyecheon Restoration Project  
Overhauling Seoul's Public Transportation System  
Formulating a Plan on Facilitating the Development of Hubs for Strategic Industries
- 2003. 1. 29.** The SI moves to its current location in Seocho-Dong.
- 2003.** Launching the Seoul Survey and Monitoring Ways to Enhance Seoulites' Quality of Life
- 2007.** Enlivening the Han River Waterfront

2010s

- 2012.** Designating Seoul Future Heritage Sites
- 2012. 7. 26.** The Seoul Development Institute becomes the Seoul Institute.
- 2015.** Designing the Seasonal Particulate Matter Management System for the Seoul Metropolitan Government (SMG)
- 2018. 12. 12.** Seoul Institute of Technology (SIT) founded.

November 1, 2023.

**The SI merges with SIT.**

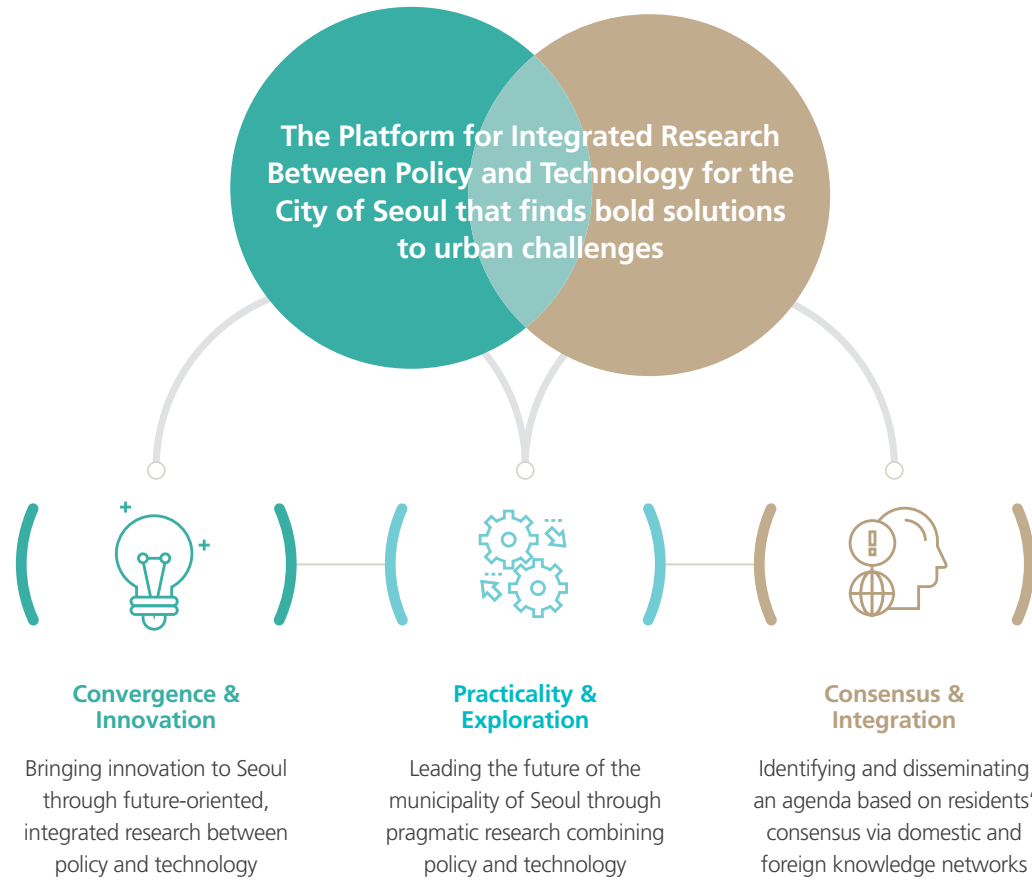
- 2024. 2. 23.** Inauguration of the 18th president, Oh Kyun
- 2024. 7. 26.** Jeongdong Office created.

2024

# About the SI

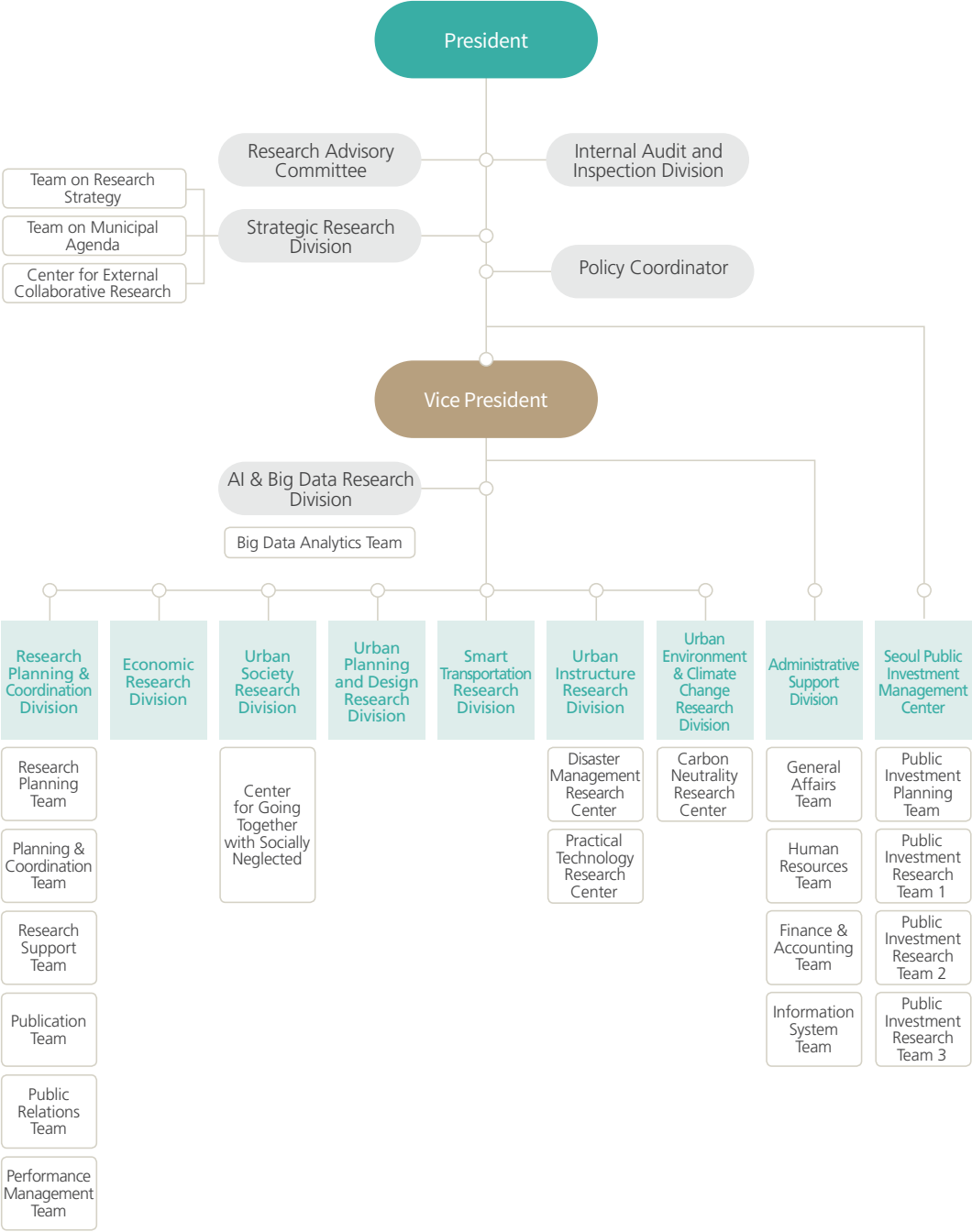
Upon merging with SIT, the SI has transformed into a platform for integrated research between policy and technology for the City of Seoul, offering innovative policy recommendations about urban issues.

## Vision & Goals



## General Information

### Organizational Chart





SI at a Glance (as of 2024)



- 1 Humanities & Social Sciences : 24%
- 2 Urban Planning : 27%
- 3 Technology & Safety : 16%
- 4 Climate & Environmental Sciences : 22%
- 5 Future Convergence : 11%



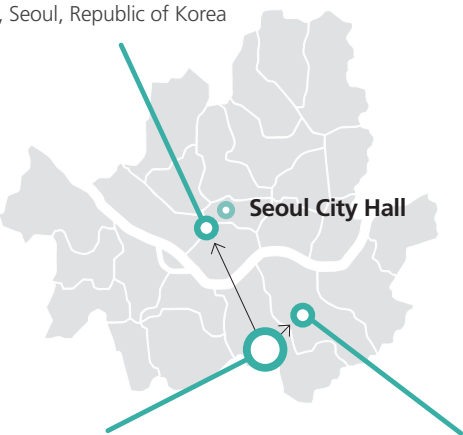
- 1 Humanities & Social Sciences : 25%
- 2 Urban Planning : 22%
- 3 Technology & Safety : 21%
- 4 Climate & Environmental Sciences : 21%
- 5 Future Convergence : 11%

SI Office Locations & Roles

Conducting research on and developing an ongoing agenda that will inform Seoul's future vision

**Jeongdong Office- Strategic Research Division**

34-17,18 Jeong-dong, Jung-gu, Seoul, Republic of Korea



Conducting basic and policy research on the future of Seoul across various disciplines

**Seocho Headquarters Campus**

57 Nambusunhwan-ro, 340-gil, Seocho-gu, Seoul, Republic of Korea

Conducting research on financial efficiency of public investment projects

**Yeoksam Office- Seoul Public Investment Management Service**

8th floor, 205 Dogok-ro, Gangnam-gu, Seoul, Republic of Korea

# SI's Divisions

## Research

- Strategic Research Division
- AI & Big Data Research Division
- Economic Research Division
- Urban Society Research Division
- Urban Planning & Design Research Division
- Smart Transportation Research Division
- Urban Infrastructure Research Division
- Urban Environment & Climate Change Research Division
- Seoul Public Investment Management Center

## Operations



## Strategic Research Division

### About

The mission of the Strategic Research Division, under direct control of the president of the SI, is to carry out research designed to respond to urgent issues faced by the municipality of Seoul, increase collaboration with global researchers, and map out strategies regarding interdisciplinary research and studies aimed at fostering purposeful and broad relationships with other organizations across the globe.

### Research Areas

- Establishing municipality research plans, including major mid- to long-term agenda items
- Finding opportunities for and building the process structure of interdisciplinary research
- Monitoring short-term agenda items and suggesting policies
- Responding to urgent issues and designing related studies
- Building and operating systems for internal/external research and collaboration
- Carrying out studies on strengthening global competitiveness

### Featured Research

- Studying agenda and solutions on improving city competitiveness
- Establishing a roadmap and plans for interdisciplinary research
- Engaging in research planning to respond to complex issues and future research demand
- Engaging in research on a Seoul-type KSP (Knowledge Sharing Program): Seoul Policy Partnership, Walkin with Seoul
- Planning MeTTa (Megacity Think-Tank alliance) summit/forums and finding opportunities for multilateral and bilateral cooperation
- Studying the roles of local communities in promoting the Seoul Metropolitan Government (SMG)'s ESG



## AI & Big Data Research Division

### About

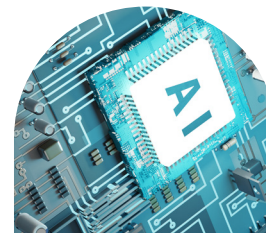
The AI & Big Data Research Division delivers interdisciplinary research on solving a wide range of urban issues with technologies of the Fourth Industrial Revolution, such as AI, big data, XR, digital platforms, ICT, and satellite images. The division is dedicated to building smart and sustainable cities based on a future technology outlook and through development of applied technologies as well as studying policies and institutional improvement.

### Research Areas

- Smart cities
- Big data & artificial intelligence (AI)
- Digital platforms
- Satellite video, Extended reality, and Digital twinning
- Autonomous driving and related applied research

### Featured Research

- Seoul's integrated response system targeting digital sex crimes
- AI-powered automatic detection system for filtering out online sex trafficking ads and illegal content for inducing sexual exploitation
- GeoAI technology (precise diagnostics) and its use towards securing safe walkways for people with limited mobility
- Applying GeoAI to optimize deployment of first responders in Seoul
- Using TV platforms to enhance the effectiveness of AI-assisted care provided to seniors living alone
- Using satellite spatial information for administration of the municipality of Seoul
- Research on creating an AI-enabled monitoring system for road issues using security cameras on Han River bridges
- Operational status and measures for enhancing Seoul's self-driving services
- Research on creating values from Seoul's platforms to accelerate digital transformation
- Interdisciplinary research to tackle urban issues with digital technologies





## Economic Research Division

### About

The Economic Research Division engages in myriad policy research projects to promote Seoul's economy and industrial innovation. The division helps Seoul add vitality to the economy and create jobs, and supports the city in achieving economic success by performing thorough analysis and coming up with strategic ideas.

### Research Areas

- **Pertaining to Industry**  
Industrial policy, entrepreneurial ventures & startups, science & technology, small businesses
- **Pertaining to Economy**  
Economy, industry, consumers, monitoring industry trends
- **Pertaining to Labor & Employment**  
Employment policy, living wage

### Featured Research

- Diagnosing policies for the center of finance in Seoul and developing a strategic agenda for the future
- Studying Seoul Fashion Week and measures to promote Seoul's fashion industry
- Seoul's startup promotion strategies to nurture next-generation unicorn companies
- Studying the innovative characteristics of and growth plan for new and growing businesses in Seoul
- Monitoring Seoul's industrial innovation
- Analyzing Seoul's economic trends and outlook
- Monitoring Seoul's economic indicators and identifying economic agenda
- Monitoring the economic status of businesses in Seoul and analyzing issues they face
- Research on the continuous employment scheme and policies for the new middle-aged to prepare for the super-aged society Korea is becoming
- Policy suggestions on a living wage scheme suited to Seoul



## Urban Society Research Division

### About

Within the Urban Society Research Division, the Center for Going Together with the Socially Neglected and a variety of other research groups take a multi-faceted look at diverse complex social issues towards laying a foundation for inclusive cities and suggesting visions to make Seoul a city for the future. The division delivers research on responding to demographic changes, promoting the happiness of families, expanding welfare services, narrowing societal gaps on education and health, empowering municipal governments, policy assessment, and creating cities of culture and tourism.

### Research Areas

- Society, demographics, and generations
- Social welfare, housing welfare, and health
- Family, care services, adolescents, and education
- Youth policy
- Culture, arts, and tourism
- Civil society, community, and governance
- Local autonomy, decentralization, and coprosperity
- City diplomacy, multiculturalism, and international cooperation
- Organizational diagnosis and performance evaluation
- Local finance

### Featured Research

- Strategies for providing digital welfare services
- Amending the standard age for welfare services in a superaged society
- Assessing the impact of Seoul's demographics
- Policies to reduce social isolation and loneliness
- Turning Seoul into a leisure-friendly city
- Strengthening Seoul's regulatory governance
- Improving Seoul's adjustment grant scheme and the methodology for estimation
- Seoul's collective housing policies and related improvements
- Seoul Youth Panel Survey
- Assessment of Seoul's welfare services



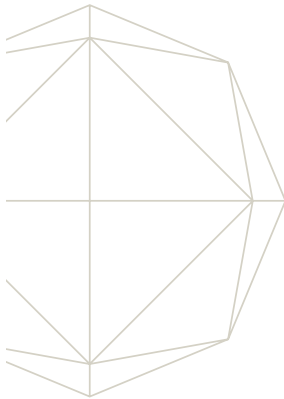
>> Center for Going Together with the Socially Neglected

Research Areas

- Review of and preliminary consultations on project plans considering socially vulnerable groups
- Assisting policy decision-making through surveys and research on support for the socially disadvantaged

Featured Research

- Researching SMG's existing policies and identifying areas for improvement in light of the socially excluded
- Setting out investment appraisal related guidelines on preliminary deliberation of projects relevant to Going Together with the Socially Neglected schemes



# Urban Planning & Design Research Division

About

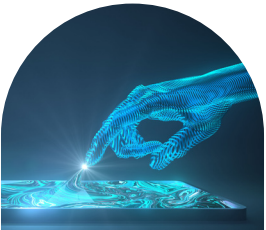
The Urban Planning & Design Research Division explores ways to create desirable cities for residents in Seoul and sustainable urban spaces through fact-based research and collaborative studies with academics and civil society. The division establishes a framework for urban planning and management by devising the Seoul Plan and the Metropolitan Plan. They are dedicated to turning Seoul into a futuristic city by promoting the balanced development of areas and urban regeneration, improving urban and residential environments, and developing public spaces.

Research Areas

- Urban planning (Seoul Plan, spatial structure)
- Urban management (urban management system, Seoul CBD and residential areas)
- Urban design & cityscape and preserving cultural heritage and history
- Balanced regional growth & urban regeneration

Featured Research

- Past and future of the Seoul Plan
- Monitoring the Seoul Plan (2024)
- Tasks for and improvement of the zoning scheme
- Strategies to enhance Seoul's competitiveness as a metropolitan city
- Large development project plans to revamp the urban structure so it is more work/home/leisure-friendly
- Innovating Seoul's public spaces in line with the expanding scope of public space
- Seoul's housing policies in line with changing demographics and housing consumption patterns





## Smart Transportation Research Division

### About

The Smart Transportation Research Division performs research on ensuring convenient and comfortable movement of residents through overall diagnosis and improvement of Seoul's transportation system (including public transit, road transportation, taxis and bicycles) as well as transportation strategies and policy support. The division is also at the forefront of improving quality of life by working on ways to expand the adoption of green transportation in response to climate change and by developing policies to better respond to the changing dynamics of future transportation – namely UAM and autonomous driving – and advancing AI and other forms of cutting-edge technology.

### Research Areas

- Mass transit system, ranging from buses to the metro
- Managing road traffic, the Intelligent Transport System (ITS), and traffic signals
- Smart mobility solutions, including urban air mobility (UAM), self-driving vehicles, and personal mobility devices
- Low-carbon transport methods, including walking and bicycling
- Taxis, logistics, and transportation demand management

### Featured Research

- Researching ways to improve the Seoul City Bus Quasi-Public Operation System
- Devising a master plan and amendments for the Seoul Metro
- Creating an SMG plan on the construction and management of roadways in Seoul
- Preparing an SMG traffic improvement master plan and mid-term plan
- Determining the effectiveness of the Climate Card pilot project
- Drawing up an SMG master plan on introducing urban air mobility (UAM)
- Joint project concerning expanding and updating passenger Origin-Destination (O/D) data for the Seoul Metropolitan Area
- Research on transportation in Seoul where the rights of the socially neglected are protected
- Future direction of infrastructure in Seoul



## Urban Infrastructure Research Division

### About

The Urban Infrastructure Research Division consists of the Urban Infrastructure Research Division, the Disaster Management Research Center and the Practical Technology Research Center. The mission of the division is to conduct research to improve technologies regarding infrastructure maintenance and safety controls, develop a disaster prediction system, and demonstrate new technologies.

### Research Areas

- Infrastructure policy
- Infrastructure management
- Construction management
- Smart construction technology
- Underground safety management

### Featured Research

- DX (SIDEEX, Seoul Infrastructure Data Expressway) Plan aimed at improving the safety of the aging infrastructure in Seoul and cutting its future costs
- Formulating strategies to reduce greenhouse gas (GHG) emissions from roadway infrastructure
- Finding ways to manage tunnels in view of their deteriorated conditions and changes in external circumstances
- Overhauling the integrated infrastructure management system to maintain roadway infrastructure in a preemptive manner
- Methods to enhance the bidder selection criteria in bids launched by the SMG

### >> Disaster Management Research Center

### Research Areas

- Disaster preparedness policy
- Disaster management system
- Natural disasters
- Social disasters
- Accidents
- Serious incidents

Featured Research

- Exploring ways to switch over to a real-time risk management system that is based on urban risk assessment
- Researching ways to enhance the training program of SMG Safety Experience Center
- Identifying ways to provide systematic support to the private sector dealing with serious incidents
- Researching ways to direct disaster vulnerable groups in an effective manner for evacuation using complex buildings with underground connections
- Finding ways to improve fire service in high-risk areas of the service

>> Practical Technology Research Center

Research Areas

- Identifying, assessing, and demonstrating advanced technologies developed at home and abroad
- Facilitating the commercialization of technology

Featured Research

- Supporting the demonstration of emerging technologies to tackle climate change
- Researching ways to establish a management process of technology demonstration projects



# Urban Environment & Climate Change Research Division

About

The mission of the Urban Environment & Climate Change Research Division is to formulate initiatives and visions aimed at building a sustainable future for Seoul. The division produces consumable research and analysis on air pollution, indoor air quality, waste, recycling, streams, water circulation, the environment, green infrastructure, climate, energy, and environmental health.

Research Areas

- Climate change & energy
- Air pollution & indoor air quality
- Waste & recycling
- Streams & water circulation
- The environment & green infrastructure
- Environmental health
- Sustainable development & climate justice

Featured Research

- Devising an SMG 3rd Basic Strategy & Action Plan on Sustainable Development for 2025 – 2044
- Formulating an SMG 4th Environmental Plan for 2026 – 2040
- Developing an SMG Master Plan on Carbon Neutrality and Green Growth for 2024 – 2033
- Preparing an SMG Masterplan on Regional Energy 2045
- Drawing up an SMG Action Plan designed to implement the 3rd Master Plan on Air Quality Management for 2025 – 2029
- Researching ways to reuse plastic waste
- Developing a deep learning-based, real-time monitoring system for urban inundation
- Identifying ways to set up an integrated pest management system for Seoul to promote the health of Seoulites and the living environment





## &gt;&gt; Carbon Neutrality Research Center

## Research Areas

- Carbon neutrality & green growth
- Climate adaptation
- Statistics on and analysis of greenhouse gas (GHG) emissions
- Laying out a roadmap and promoting cooperation to reach carbon neutrality
- Energy transition

## Featured Research

- Assessing and improving the performance of the SMG Framework Act on Carbon Neutrality and Green Growth
- Providing a base for implementing and revamping SMG climate adaptation strategy
- Calculating and upgrading Seoul's municipal GHG emissions inventory
- Preparing the groundwork for and plans to facilitate regional collaboration achieving carbon neutrality in Seoul
- Exploring ways to launch and foster the carbon trading market in Seoul



## Seoul Public Investment Management Center

## About

The mission of the Seoul Public Investment Management Center is to evaluate the appropriateness and feasibility of public investment projects that are designed and undertaken by the SMG and assist with the SMG executing such projects in a systematic way.

## Research Areas

- Studying the feasibility of major investment projects
- Verifying the results of feasibility studies completed by other organizations
- Examining the feasibility of projects subject to investment appraisal
- Providing personalized consulting services for greater efficiency in public project planning
- Performing preliminary reviews of proposals for new private investment projects
- Analyzing and determining the eligibility of projects and engaging in relevant negotiations
- Formulating management implementation plans
- Reviewing feasibility of plans for establishment of institutions funded or otherwise receiving investment from autonomous gu-districts

## Featured Research

- **Pertaining to Public Investment**
  - Feasibility studies/Appraisals of local government investment projects
  - Preliminary reviews of investment projects subject to central government appraisal
- **Pertaining to Private Investment**
  - Negotiations on a private investment agreement regarding the development of Seoul International Complex (transforming Jamsil Sports Complex into a MICE complex)
  - Assessment of the eligibility of a private investment project and private sector proposals concerning construction of a gondola lift system at Seoul Grand Park
- **Pertaining to Research**
  - A study on using spatial information to forecast demand for urban railways
  - Research on ways to restructure the components and hierarchy of a feasibility study concerning setting up a local government-funded organization
  - A study on issues relating to the SMG investment appraisal system towards its improvement





## Operations

### About

The work of the Research Planning & Coordination Division and Administrative Support Division contributes to the institute's vision by conceiving research projects in a creative and forward-thinking manner, executing integrated communication plans and media relations programs and creating content to be delivered to the public.

### >> Research Planning & Coordination Division

#### Primary Functions

- Setting the organization's mid- and long-term goals
- Preparing mid- and long-term development and financial plans
- Running the board, supporting the implementation of internal regulations
- Liaising with the National Assembly of the Republic of Korea and the Seoul Metropolitan Council
- Managing budgets
- Tracking and assessing performance of the Seoul Institute
- Planning, managing and supporting research projects
- Engaging and interacting with the media, the public, and other research organizations
- Producing and curating content
- Releasing research papers and publishing books

### >> Administrative Support Division

#### Primary Functions

- Developing, hiring, and training employees and managing compensation and benefits packages
- Performing accounting-related tasks
- Overseeing the physical infrastructure of offices
- Ensuring occupational safety and health
- Managing office supplies and equipment
- Implementing and operating all technology infrastructure

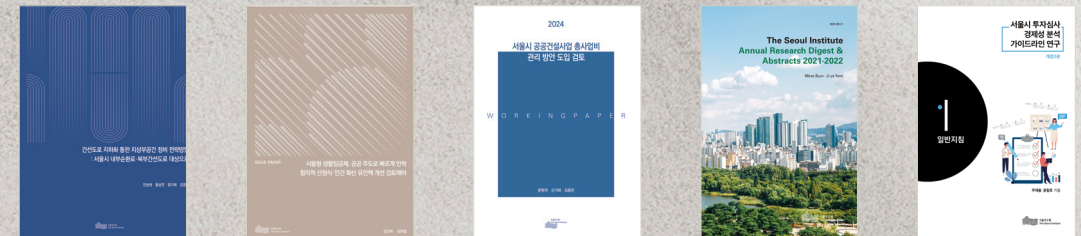


## SI Research Publications

Towards maximizing the impact of our research and disseminating information on current urban challenges and policy trends in South Korea and abroad, our findings and recommendations on varied urban policy issues are summarized in three publication formats: reports, books, and regular publications.

### Research Reports

In-depth analysis and policy proposals regarding problems confronting cities



### Occasional Books

Research outcomes, presented in an accessible, easy-to-understand way



### Regular Publications

Latest research in urban studies as well as urban policy trends and issues



Biweekly content  
Global Urban  
Trends

A magazine featuring policies and practices of major cities around the globe

Biweekly content  
Policy  
Reports

A report analyzing policy issues

Quarterly content  
Seoul  
Studies

An academic journal focusing on urban studies

Monthly content  
SI  
Card News

A blend of text and images summarizing certain research articles

Monthly content  
Seoul  
Infographics +

A graphic representation of data on Seoul and the life of its citizens



Together, we are building a brighter  
future for Seoul.

THE SEOUL INSTITUTE

**Copyright**

The Seoul Institute

December 2024

Published by Oh Kyun

The Seoul Institute (Seocho Headquarters Campus)

57 Nambusunhwan-ro, 340-gil, Seocho-gu, Seoul 06756 Korea

<https://www.si.re.kr/>

Designed by SEILFOCUS